



**NOTES**

All dimensions must be checked on site and not scaled from this drawing.

Rev:



**CHARTERED BUILDING SURVEYORS**

The Coach House  
 Station Farm  
 Fen Road  
 Lode  
 Cambridge  
 CB25 9HD

Telephone : 01223 812700

**CLIENT:**

Cambridge Management  
 Consultants Ltd

**JOB TITLE:**

32 Mill Road  
 Cambridge

**DRAWING TITLE:**

Location Plan

**SCALE:** 1 : 1250

**DATE:** June 2012

**DRAWN:** DPB

**DRAWING No:** 11398 / 09

**NOTES**  
All dimensions must be checked on site and not scaled from this drawing.

Rev: a - 14 June 2012 - Room names added.

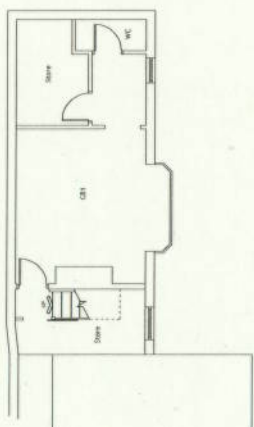


**BBS**  
The Coach House  
Station Farm  
Fen Road  
Lode  
Cambridge  
CB25 9HD  
Telephone : 01223 812700  
Fax : 01223 812701

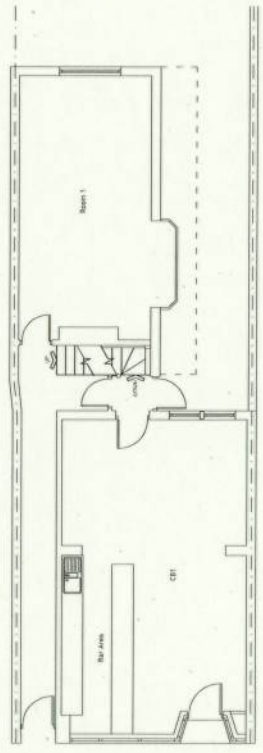
**CLIENT**  
Cambridge Management  
Consultants Ltd

**JOB TITLE:**  
32 Mill Road  
Cambridge

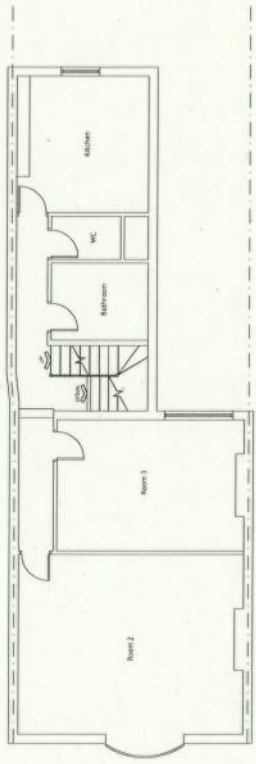
<b>DRAWING TITLE:</b>	Existing Plans
<b>SCALE:</b>	1 : 100
<b>DATE:</b>	October 2011
<b>DRAWN BY:</b>	DPS
<b>CHECKED BY:</b>	
<b>DRAWING NO:</b>	11398 / 06 a



Basement



Ground Floor



First Floor



Second Floor

**NOTES**  
 All dimensions must be checked on site and not scaled from this drawing.

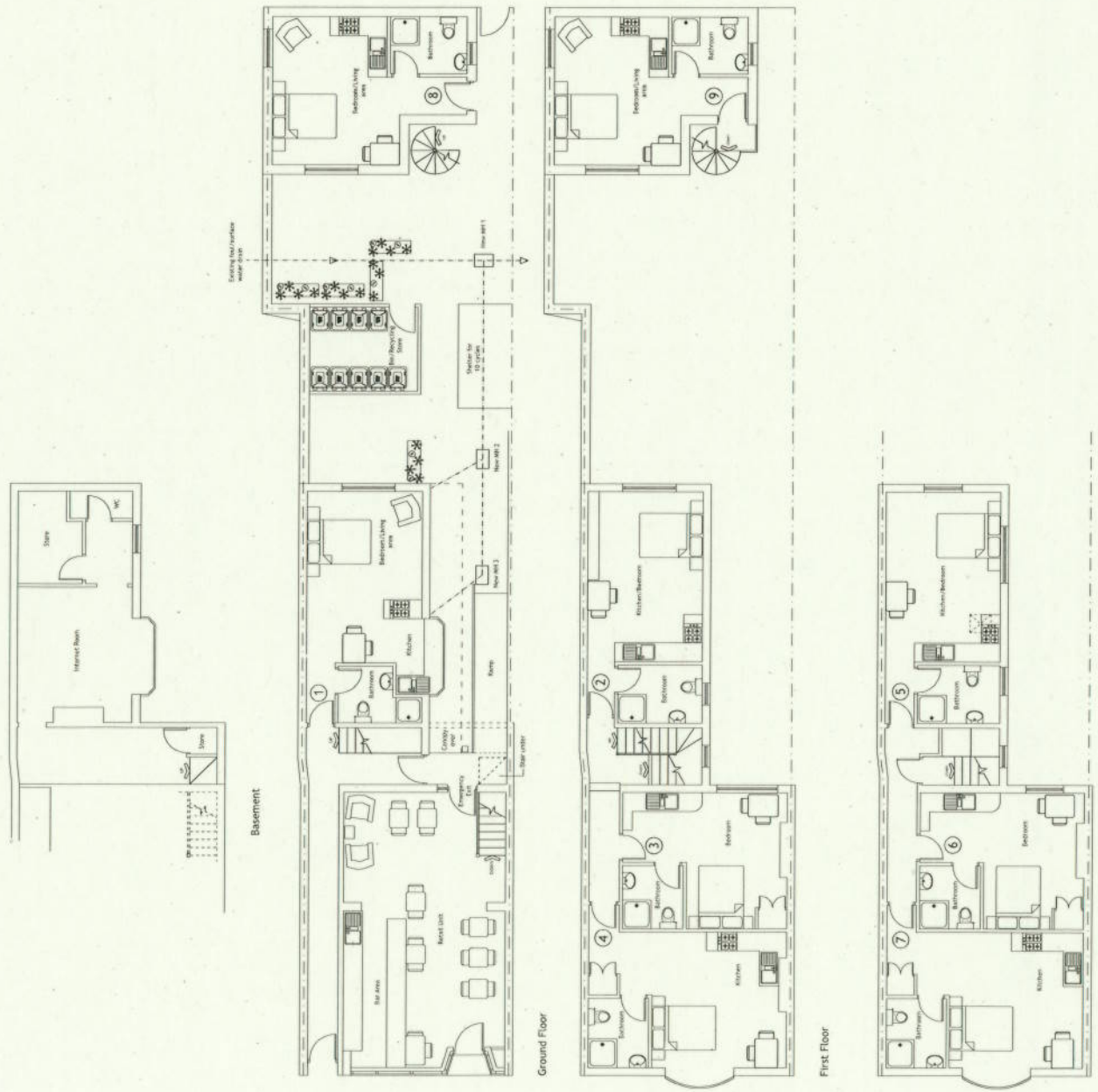
**Rev:**  
 a - 01 March 2012 - Ground, First and Second Floor layouts revised.  
 b - 15 March 2012 - Basement & Ground Floor layouts revised.  
 c - 19 March 2012 - Ground Floor layout revised.  
 d - 14 June 2012 - Notes revised.  
 e - 27 June 2012 - Drainage added.  
 f - 17 August 2012 - Layout modified to basement & ground floor.  
 g - 20 August 2012 - Layout modified to basement & ground floor.  
 h - 31 August 2012 - Access stairs to basement revised.



The Coach House  
 Station Farm  
 Fen Road  
 Lode  
 Cambridge  
 CB25 9HD  
 Telephone : 01223 812700  
 Fax : 01223 812701

Cambridge Management  
 Consultants Ltd

<b>JOB TITLE:</b>	32 Mill Road Cambridge
<b>PROPOSING TITLE:</b>	Proposed Plans
<b>SCALE:</b>	1 : 100
<b>DATE:</b>	October 2011
<b>DRAWN BY:</b>	DPB
<b>CHECKED BY:</b>	
<b>DATE:</b>	11398 / 07 h

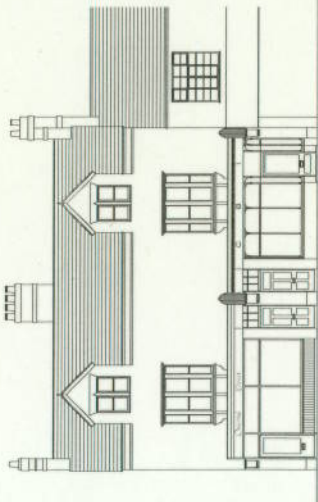


Basement

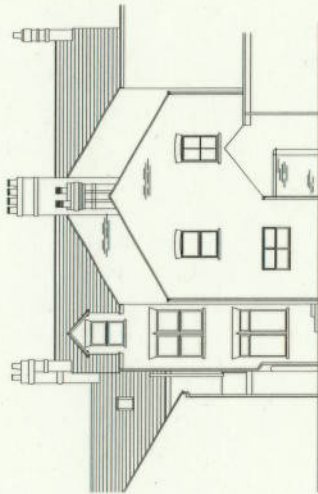
Ground Floor

First Floor

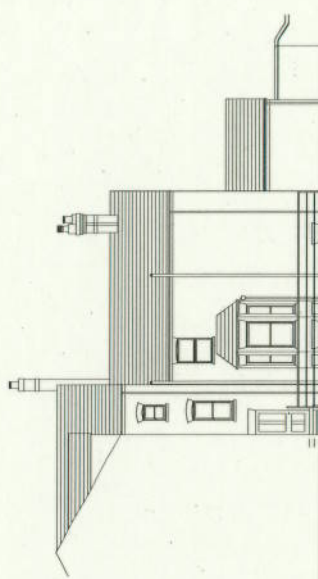
Second Floor



North Eastern Elevation  
Existing



South Western Elevation



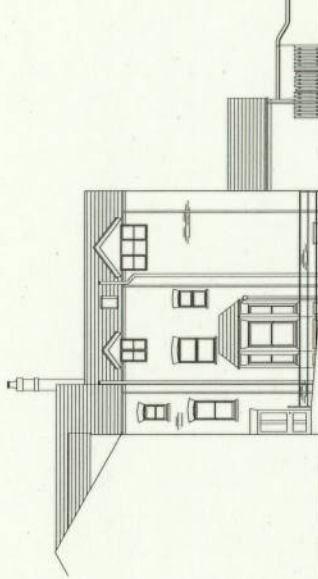
North Western Elevation



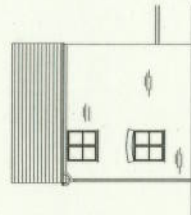
North Eastern Elevation  
Proposed



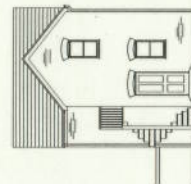
South Western Elevation



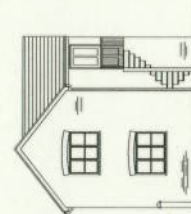
North Western Elevation



South Eastern Elevation



North Western Elevation



North Eastern Elevation



South Western Elevation

**NOTES**  
All dimensions must be checked on site and not scaled from this drawing.

- REV:**
- a - 11 May 2012 - Further elevations for apartments 9 & 10 added.
  - b - 13 June 2012 - Elevations for apartments 9 & 10 revised.
  - c - 17 July 2012 - Brickwork enclosure revised.
  - d - 31 August 2012 - Two further elevations added for the Coach House and external area revised.



**CLIENT:**  
The Coach House, Station Farm,  
Pen Road, Lode,  
Cambridge  
CB25 9HD  
Telephone : 01223 812700  
Fax : 01223 812701

**JOB TITLE:**  
Cambridge Management  
Consultants Ltd

**SCALE:**  
1 : 100  
**DRAWING TITLE:**  
Existing &  
Proposed Elevations

**DATE:**  
May 2012  
**DRAWING NO:**  
DPB  
**DRAWING NO:**  
11398 / 08 d